

LAGO

NEW PRODUCTS 2023

Lamps

Wall Units

Tv Units

Bookshelves

Sofas

Armchairs

Tables

Chairs

Sideboards

Mirrors & Consolles

Beds

Dressers

Bedside Tables

Wardrobes

LAGO

"L'EQUILIBRIO AL CENTRO DEL TUTTO.
PERSONE, NATURA E TECNOLOGIA.
COSÌ INTENDIAMO IL DESIGN."

Daniele Lago

<u>LAMPS</u>	4
Waii	5
Glee	6
Heiko	8
Heiko Double	10

<u>WALL UNITS</u>	12
Materia	12
36e8	22
N.O.W.	32

<u>TV UNITS</u>	36
36e8 Glass	36
36e8	40
Air	44
Materia	48
N.O.W.	50

<u>BOOKSHELVES</u>	52
Air	52
LagoLinea	56
Pentagram	58

<u>SOFAS</u>	60
Hero	60
Air Soft Slim	70
Happening	74
Air Soft	78
Air Soft Free	82
Sand	86

<u>ARMCHAIRS</u>	90
Zeppelin	90

<u>TABLES</u>	92
Hoa	92
Air Soft	98

<u>CHAIRS</u>	100
Nacho	100
Ruffle	102
Zeppelin	106

<u>SIDEBOARDS</u>	108
36e8	108
36e8 Glass	112
Materia	114
N.O.W.	118

<u>MIRRORS & CONSOLES</u>	122
--------------------------------------	------------

<u>BEDS</u>	132
Bed-In	132
Bounty	138

<u>BEDSIDE TABLES</u>	142
Class	142
Livre	144
Hom	146

<u>DRESSERS</u>	148
36e8	148
36e8 Glass	150
Materia	152
Air	154

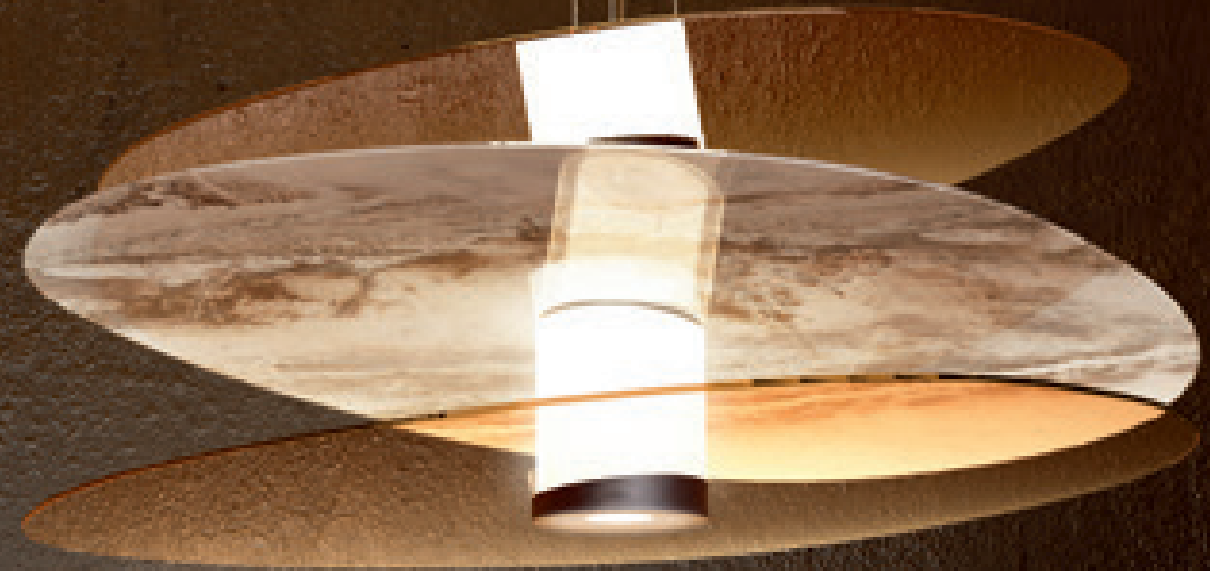
<u>WARDROBES</u>	156
Air Walk-in Closet	156
N.O.W.	158

<u>FINISHINGS</u>	160
--------------------------	------------

Lamps

LAGO debutta nel campo dell'illuminazione estendendo la sua visione del design maturata in decenni di attività. Corpi luminosi dal carattere deciso creano suggestivi giochi di luce diretta e indiretta, enfatizzando le venature dei marmi e le trasparenze di superfici dalle forme irregolari, ispirate alle sagome di pietre e gemme pregiate. Grazie all'ampia gamma di finiture, che spazia da XGlass a vetri colorati, le lampade dialogano con i best seller LAGO, offrendo coerenza nella progettazione di ambienti completi.

LAGO is launching its debut lighting collection, carrying over a design vision curated through decades in business. Sumptuous surfaces effects are created with statement lighting, both direct and indirect. The lamps bring out the marble vein and see-through smoked glass finishes of LAGO's irregularly shaped designs, inspired by the natural forms of precious stones and gems. Available in a vast array of finishes, from XGlass to coloured glass, these pieces help you to create coherent interiors alongside LAGO's best-selling designs.



WAI LAMP

Design ANDREA LEONI - LAGO STUDIO

^{IT} Piani in vetro inclinati fluttuano attorno a un corpo luminoso centrale che genera un'illuminazione suggestiva e funzionale.

^{EN} *Angled glass elements levitate around a central body that creates atmospheric, functional lighting.*

GLEE LAMP

Design DANIELE LAGO

Il Frutto del binomio tra eleganza e tecnologia, Glee offre una luce diretta e crea un effetto di retroilluminazione sulle lastre in vetro, dando risalto alle venature del marmo XGlass.

EN The essence of elegance and technology combined, Glee provides a direct source of light, creating a backlighting effect on the glass panels and emphasising the XGlass marble vein.

HEIKO LAMP

Design LAGO STUDIO

^{IT} Forme sinuose, personalizzabili con tutte le finiture della gamma XGlass, sprigionano l'incanto della natura in un sistema di luce indiretta.

^{EN} Sinuous lines, customisable in the full range of XGlass finishes, unleash the captivating power of nature with this indirect lighting system.



HEIKO LAMP 2603 - Calacatta gold matt XGlass.

W 60,5 cm / D 46,5 cm / H 100-40 cm
W 110,3 cm / D 59,5 cm / H 100-40 cm



HEIKO DOUBLE LAMP 2604 - Alabastro polished XGlass.

W 121,1 cm / D 107,7 cm / H 100-40 cm

Materia Wall Unit

Design DANIELE LAGO

MATERIA WALL UNIT 2157

MATERIA HANGING UNIT - Verde alpi polished XGlass fronts and structure.

MATERIA TV UNIT 1048B - Bronzo polished XGlass fronts and structure.

PLEASURE COFFEE TABLE 1417 - Wildwood scuro.

PLEASURE COFFEE TABLE 1419 - Mandorla polished glass.

W 368,8 cm / D 40,6 cm / H 174 cm

W 36,8 cm / D 32 cm / H 110,4 cm

W 368,8 cm / D 40,6 cm / H 28 cm

W 107,7 cm / D 121,1 cm / H 35 cm

W 51,4 cm / D 47,8 cm / H 37,9 cm

^{IT} Nuovi pensili completano la parete attrezzata Materia: monoliti di grande valore grazie alla raffinata continuità di venatura dei marmi.



^{EN} New wall units complete the Materia feature wall design: stunning marble monoliths with an elegant continuous grain.





MATERIA WALL UNIT 2158

GLASSERIE SHELF - Bronzo polished XGlass. Bronze smoked glass.
GLASSERIE SHELF - Bronzò polished XGlass. Bronze smoked glass.
GLASSERIE SHELF - Bronzo polished XGlass. Bronze smoked glass.
MATERIA TV UNIT 1048B - Emperador polished XGlass fronts and structure.

W 405,7 cm / D 40,6 cm / H 174 cm
W 147,2 cm / D 24,8 cm / H 27,6 cm
W 147,2 cm / D 24,8 cm / H 18,4 cm
W 147,2 cm / D 24,8 cm / H 36,8 cm
W 405,7 cm / D 40,6 cm / H 28 cm

**MATERIA WALL UNIT 2159**

MATERIA BOISERIE - Geode polished XGlass.

MATERIA TV UNIT - Geode polished XGlass fronts and structure.

UPGLASS COFFEE TABLE - Peltro polished XGlass. Extra-clear glass legs.

UPGLASS COFFEE TABLE - Peltro polished XGlass. Extra-clear glass legs.

W 332 cm / D 42,9 cm / H 202 cm

W 331,2 cm / D 2,3 cm / H 147,2 cm

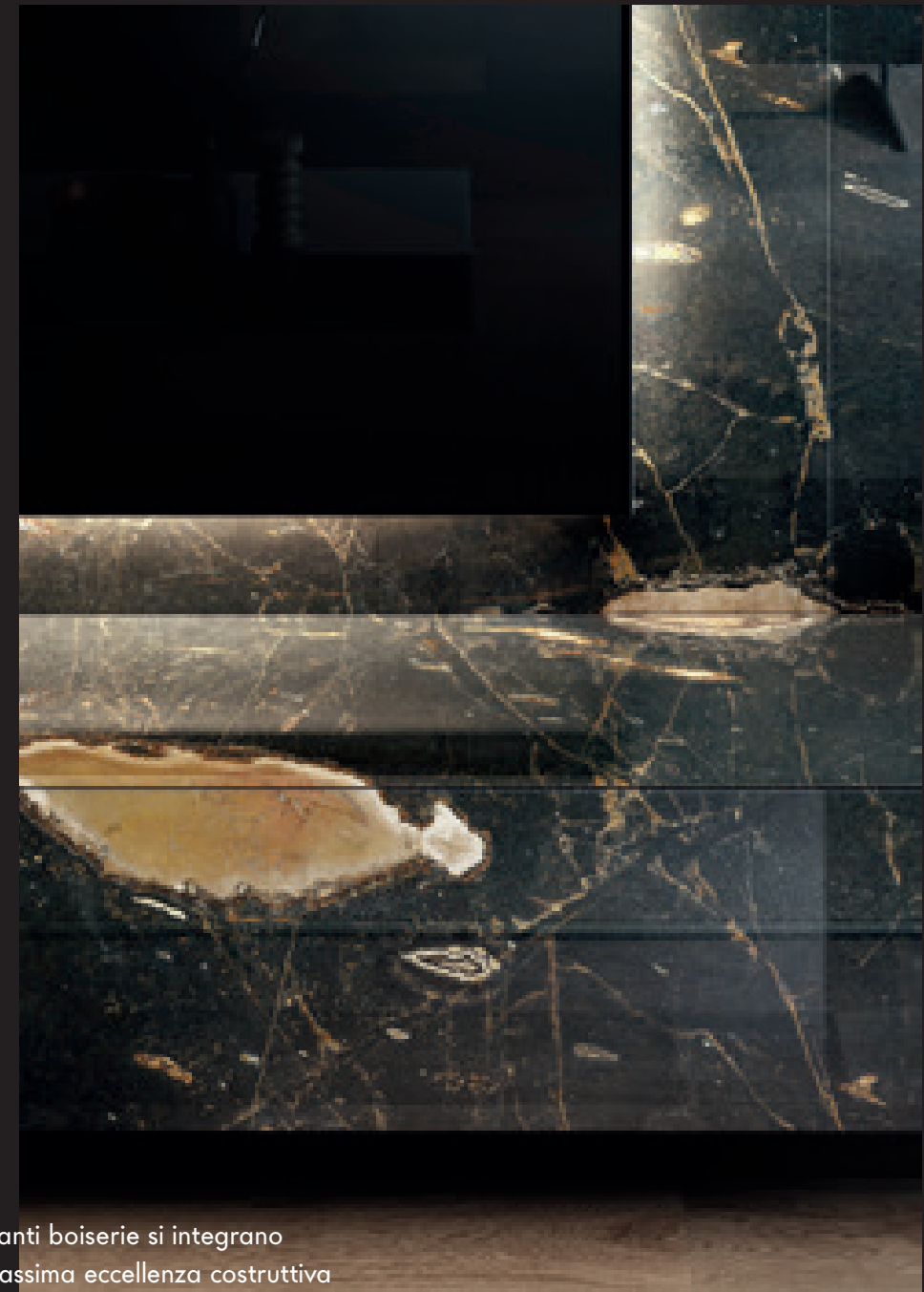
W 332 cm / D 40,6 cm / H 37,2 cm

W 101,2 cm / D 101,2 cm / H 27 cm

W 101,2 cm / D 55,2 cm / H 27 cm

^{IT} Un sistema decorativo materico riveste le pareti di living contemporanei, rendendo semplice e invisibile il cablaggio di device multimediali.

^{EN} This decorative textured design covers the walls for a contemporary living space, handily hiding away the wiring for all your multimedia devices.



^{IT} Eleganti boiserie si integrano con massima eccellenza costruttiva ai contenitori Materia, offrendo un'esclusiva continuità di venatura del marmo XGlass.

^{EN} *Elegant panelling has been skilfully built into the Materia storage units, creating an exclusive marble XGlass finish with a continuous grain.*

36e8 Wall Unit

Design DANIELE LAGO

L'icona modulare 36e8 si evolve grazie a linee essenziali e raffinati ingredienti.

The iconic modular 36e8 unit in its next iteration, with simple lines and sophisticated features.

36e8 WALL UNIT 2155

36e8 STORAGE - luta polished glass fronts. luta lacquer structure.

36e8 GLASS STORAGE - Bronze smoked glass structure. Alabastro polished XGlass back.

36e8 TV UNIT 1410 - Wildwood naturale fronts. Gentle oak structure.

BLENDIE COFFEE TABLE 1412 - Port Saint Lauren and Peltro polished XGlass, fango polished glass.

AIR ROUND COFFEE TABLE - Tundra Metal polished glass.

W 460 cm / D 40,6 cm / H 157 cm

W 184 cm / D 40,6 cm / H 36,8 cm

W 147,2 cm / D 24,8 cm / H 55,2 cm

W 368 cm / D 40,6 cm / H 36,8 cm

W 84,8 cm / D 70,2 cm / H 37,9 cm

W 90 cm / D 90 cm / H 32,5 cm

IT La rigorosa costruzione a 45° del vetro temperato testimonia l'eccellenza costruttiva dei contenitori 36e8 Glass.

EN A sleek 45° finish for tempered glass testifies to the exceptional artisanal skill with which the 36e8 glass storage units were created.



^{IT} La retroilluminazione del televisore esalta la superficie del marmo XGlass e le sue caratteristiche estetiche, dando vita a una soluzione dal grande impatto visivo.

^{EN} *Lighting behind the Tv brings out the marble XGlass surface and its outstanding aesthetics, creating a real statement piece.*

36e8 WALL UNIT 2156

36e8 BOISERIE - Port Saint Laurent polished XGlass.

36e8 STORAGE - Moka polished glass fronts. Moka lacquer structure.

36e8 STORAGE - Moka polished glass fronts. Moka lacquer structure.

GLASSERIE SHELF - Port Saint Laurent polished XGlass. Bronze smoked glass.

AIR COFFEE TABLE - Coccodrillo verde polished XGlass.

W 460 cm / D 42,9 cm / H 184 cm

W 220,8 cm / D 2,3 cm / H 147,2 cm

W 55,2 cm / D 40,6 cm / H 147,2 cm

W 36,8 cm / D 40,6 cm / H 147,2 cm

W 73,6 cm / D 24,8 cm / H 73,6 cm

W 190 cm / D 90 cm / H 32,5 cm



^{IT} Libri, vasi e oggetti preziosi sembrano fluttuare sorretti dalle mensole in vetro fumé di Glasserie.

^{EN} Books, vases and precious ornaments seem to float mid-air, supported only by the Glasserie smoked glass shelves.

36e8 WALL UNIT 1918

36e8 GLASS STORAGE - Bronze smoked glass structures. Piombo Metal polished glass backs.

36e8 TV UNIT 1410 - Moka polished glass fronts. Moka lacquer structure.

AIR SHELF - Geode polished XGlass.

W 533,6 cm / D 40,6 cm / H 154,2 cm

W 276 cm / D 24,8 cm / H 55,2 cm

W 294,4 cm / D 40,6 cm / H 36,8 cm

W 294,4 cm / D 40,6 cm / H 8 cm

N.O.W. Wall Unit

Design DANIELE LAGO

^{IT} I volumi sospesi della parete attrezzata N.O.W., dotati di un'innovativa apertura brevettata, offrono generose soluzioni contenitive e conferiscono un ritmo elegante alla zona giorno.

^{EN} The N.O.W. feature wall units, fitted with an innovative patented opening, offer generous storage space and create an elegant sense of rhythm in the living room.



N.O.W. WALL UNIT 2160

N.O.W. HANGING UNIT 1377B - Peltro and Titanio polished XGlass fronts. Peltro polished XGlass top.
 36e8 STORAGE - Havana polished glass fronts. Havana lacquer structure.
 36e8 STORAGE - Havana polished glass fronts. Havana lacquer structure.

W 408 cm / D 40,6 cm / H 158 cm

W 207,8 cm / D 40,6 cm / H 64,8 cm

W 184 cm / D 40,6 cm / H 27,6 cm

W 147,2 cm / D 40,6 cm / H 27,6 cm



N.O.W. WALL UNIT 2163

N.O.W. HANGING UNIT 1379 - Tortora and avorio polished glass, Titanio polished XGlass, bronze smoked glass fronts. Tortora polished glass top.
 MATERIA TV UNIT 1048B - Titanio polished XGlass fronts and structure.
 AIR ROUND COFFEE TABLE - Tundra Metal polished glass.
 LAYERS COFFEE TABLE - Bronze smoked glass top and legs. Alabastro polished XGlass base.

W 457,4 cm / D 40,6 cm / H 178 cm

W 163,8 cm / D 40,6 cm / H 129,2 cm

W 295,2 cm / D 40,6 cm / H 28 cm

W 90 cm / D 90 cm / H 37,9 cm

W 147,2 cm / D 78,2 cm / H 31 cm

IT Le ante in vetro fumé bronzo valorizzano e donano calore all'oggetto custodito, esplorando un inedito dialogo estetico tra esposizione e contenimento.



EN Smoked bronze glass doors give the items stored behind them a warm glow and sense of importance, creating a playful aesthetic combining the unit's display and storage functions.

36e8 Glass Tv Unit

Design DANIELE LAGO



36e8 GLASS TV UNIT 2151 - Alabastro polished XGlass fronts. Iuta lacquer, grey smoked glass structure.
AIR COFFEE TABLE - Ruggine lacquer.
PLEASURE COFFEE TABLE - Wildwood scuro.

W 331,2 cm / D 40,6 cm / H 56,9 cm
W 147,2 cm / D 78,2 cm / H 28 cm
W 74 cm / D 60,7 cm / H 35 cm

IT Preziosi dettagli e trasparenze definiscono la raffinatezza dei contenitori 36e8 Glass, forme di espressione creativa dal design destrutturato e leggero.



36e8 GLASS TV UNIT 2149 - Wildwood grigio, nero polished glass fronts. Nero lacquer, bronze smoked glass, Gentle oak structure. Peltro steel supports.

W 294,4 cm / D 40,6 cm / H 59,6 cm



36e8 GLASS TV UNIT 2150 - Tundra Metal polished glass fronts. Havana lacquer, grey smoked glass structure. Grey smoked glass supports.

W 257,6 cm / D 40,6 cm / H 59,6 cm

EN Delicate details and a see-through finish give the 36e8 glass storage units elegance. Creative expression in unit form, with a light-looking, deconstructed design.

36e8 Tv Unit

Design DANIELE LAGO

Contrasti di pieni e vuoti, materiali e finiture: 36e8 offre soluzioni dal design contemporaneo per la parete Tv.

*Contrasting full and empty spaces, materials and finishes:
36e8 is perfect for a contemporary Tv wall design.*

36e8 TV UNIT 2146 - Moka polished glass fronts. Moka lacquer structure.
Oro polished XGlass niche surface. Extra-clear glass supports.

W 312,8 cm / D 40,6 cm / H 50,4cm



36e8 TV UNIT 2147 - Geode polished XGlass, Wildwood scuro fronts.
Nero lacquer, Gentle oak structure. Nero matt glass niche surface.
Grey smoked glass supports.

W 276 cm / D 40,6 cm / H 64,2cm

EN From LAGO's ongoing in-depth research come unique textured finishes, combining warm wood with high-end materials such as marble.

IT Da una continua e accurata ricerca, nascono soluzioni materiche uniche che fondono il calore del legno alle emozioni di materiali preziosi come il marmo.



Air Tv Unit

Design DANIELE LAGO

AIR TV UNIT 2152 - Nero polished glass fronts. Nero lacquer structure.
Geode polished XGlass shelf. Extra-clear glass supports.

W 331,2 cm / D 40,6 cm / H 56,9 cm



AIR TV UNIT 2607 - Grafite polished glass fronts. Grafite lacquer structure.
Verde alpi polished XGlass shelf. Extra-clear glass supports.

W 184 cm / D 40,6 cm / H 63,4 cm

EN A self-standing Tv unit to express the full force of the ultra-light Air collection, now with elegant shelving for a new textural direction.

IT Il mobile Tv self-standing che esprime l'audace e distintiva leggerezza del sistema Air, si completa con raffinate mensole, regalando nuovi percorsi materici.



Materia Tv Unit

Design DANIELE LAGO

Il carattere monolitico di Materia si evolve grazie a un inedito utilizzo dei materiali: superfici materiche creano una contrapposizione armonica delle finiture e nuovi design.

EN Materia's monolithic core takes on a new form, making use of materials in a way never seen before. Textured surfaces create an accordant juxtaposition of finishes and new designs.

MATERIA TV UNIT 2153 - Onice grigio matt XGlass fronts and top.
Havana polished glass fronts and structure.

W 368,8 cm / D 40,6 cm / H 46,4cm

N.O.W. Tv Unit

Design DANIELE LAGO



N.O.W. TV UNIT 2117 - Tundra Metal polished glass, bronze smoked glass fronts.
Peltro steel supports.

W 299,8 cm / D 40,6 cm / H 78 cm

Air Bookshelf

Design DANIELE LAGO



^{IT} Essenziale e flessibile, Air offre soluzioni su misura per qualsiasi spazio e metratura, rispondendo a ogni esigenza abitativa.

^{EN} Sleek and flexible, Air offers tailor-made solutions for any space and square footage, to suit all living requirements.



AIR BOOKSHELF 1463 - Tortora lacquer. Wildwood naturale front. Gentle oak structure.

W 110,4 cm / D 40,6 cm / H 168,9 cm



AIR BOOKSHELF 1462 - Havana, moka, castagno, lacquer. Grey smoked glass supports.

W 110,4 cm / D 40,6 cm / H 183,5 cm

LagoLinea Bookshelf

Design DANIELE LAGO



LAGOLINEA BOOKSHELF 2610 - Havana lacquer.

W 137,8 cm / D 24,8 cm / H 193,4 cm

IT Un'ampia gamma di nuove composizioni dal design eterogeneo, disponibili in diverse dimensioni, semplificano la progettazione di LagoLinea, preservando la sua espressività.

EN A new range of eclectic design compositions available in different sizes simplify the LagoLinea concept, while preserving its expressive quality.



LAGOLINEA BOOKSHELF 2611 - Moka, fango lacquer. Port Saint Laurent polished XGlass.

W 159,2 cm / D 24,8 cm / H 199,4 cm

Pentagram Bookshelf

Design DANIELE LAGO

IT Un design sospeso e dinamico detta il ritmo dell'interior: tre moduli di diverse larghezze si accostano consentendo la progettazione estremamente semplificata di soluzioni a terra o sospese.

EN A dynamic, wall-mounted design sets the tone for the interiors. With three units side by side in different widths, it has never been easier to design floor-standing or wall-mounted compositions.

PENTAGRAM BOOKSHELF 1456 - Geode polished XGlass backs. Havana lacquer shelves and sides.
AIR SOFA - Francis 100 fabric. Extra-clear glass legs.
PLEASURE COFFEE TABLE 1420 - Amaranto polished glass.
LEAN COFFEE TABLE - Wildwood naturale.
PULSE CARPET - Colour 279.

W 496,4 cm / D 28,6 cm / H 173,8 cm
W 294 cm / D 110,4 cm / H 78,2 cm
W 110,3 cm / D 59,5 cm / H 37,4 cm
W 120 cm / D 78,2 cm / H 28 cm
W 400 cm / D 300 cm

Hero Sofa

Design MAURO LIPPARINI

^{IT} Ispirato alla corposità espressiva degli anni '70, Hero è caratterizzato dalle geometrie radicali di braccioli e schienali che abbracciano le sedute in un gioco di incastri e sporgenze, definendo un divano dalle linee morbide e cosmopolite.

^{EN} *Inspired by the expressive gusto of the '70s, Hero boasts radical geometric armrests and backrests that surround the seats. Interlocking forms that jostle and jut out make for a sophisticated sofa design with soft lines.*





HERO SOFA 2612 - Barnum 1 fabric.

AIR ROUND COFFEE TABLE - Tundra Metal polished glass.

BLENDIE COFFEE TABLE 1412 - Port Saint Laurent and Peltro polished XGlass, fango polished glass.

PULSE CARPET 795

W 484 cm / D 173 cm / H 68 cm

W 90 cm / D 90 cm / H 32,4 cm

W 84,8 cm / D 70,2 cm / H 37,9 cm

300x400 + 300x400



^{IT} Una ricercata tappezzeria sartoriale, attraverso sapienti trapuntature, conferisce ritmo e movimento alle superfici interne, rese dinamiche da un elegante gioco di chiari e scuri.

^{EN} Refined sartorial upholstery with dexterous quilting creates a sense of rhythm and movement across the interior surfaces. To finish, an elegant play on light-and-dark effects shakes up the design, for a dynamic look.





HERO SOFA 2613 - Frosty 10 fabric.
HIVE CARPET 396

W 509 cm / D 337 cm / H 68 cm
400x300 + 400x300



IT Il sistema di sedute Hero, grazie alla sua componibilità, consente innumerevoli soluzioni di grande personalità.

EN Thanks to its modular mould, the Hero seating design can be used to create countless compositions with real character.



Air Soft Slim Sofa

Design DANIELE LAGO

AIR SOFT SLIM SOFA 2615 - Axum 12 fabric. Fard leather 2374.
LAYERS COFFEE TABLE - Grey smoked glass top and legs. Coccodrillo verde polished XGlass base.
DIVE CARPET 694

W 449,6 cm / D 132,8 cm / H 77 cm
W 147,2 cm / D 78,2 cm / H 31 cm
400x300 + 400x300



^{IT} Schienali snelli ed ergonomici danno forma a un divano dalla seduta generosa, contenendo al contempo l'ingombro nello spazio.

^{EN} *With slender, ergonomic backrests and generously sized seating, this sofa design takes up surprisingly little space.*



Happening Sofa

Design MAURO LIPPARINI

Forme ergonomiche e avvolgenti invitano
ad abbandonarsi alla convivialità.

*Its ergonomic, rounded forms invite you
to let go and enjoy the social experience.*

HAPPENING SOFA 1485 - Penny 11 fabric.
PULSE CARPET 246

W 370 cm / D 170 cm / H 76 cm
300x250 + 300x250

^{IT} Le superfici sono segnate da accenti sartoriali lineari e puntiformi. Dettagli che sottolineano morbidezza e compostezza nella lavorazione della tappezzeria.



^{EN} Tailored accents in both the linear and dotted-effect patterns give the surfaces their identity. These details emphasise the soft composure of the upholstery work.

Air Soft Sofa

Design DANIELE LAGO



AIR SOFT SOFA 2614 - Please 803. Peltro steel legs. Wildwood naturale.
UPGLASS COFFEE TABLE - Peltro polished XGlass top. Extra-clear glass legs.
UPGLASS COFFEE TABLE - Peltro polished XGlass top. Extra-clear glass legs.

W 491,2 cm / D 314,6 cm / H 69 cm
W 101,2 cm / D 101,2 cm / H 27 cm
W 101,2 cm / D 55,2 cm / H 27 cm

^{IT} Grazie a un morbido rivestimento in piuma d'oca certificata e all'innovativo telaio in alluminio della base, il divano Air Soft regala massimo comfort e inalterabilità nel tempo.

^{EN} Thanks to a soft padding in certified goose down and an innovative aluminium frame, Air Soft Sofa guarantees maximum comfort and durability.



Air Soft Free Sofa

Design DANIELE LAGO

AIR SOFT FREE SOFA 1917 - Frosty 9 fabric. Peltra steel legs.
PLEASURE COFFEE TABLE 1420 - Wildwood grigio.
PLEASURE COFFEE TABLE 1419 - Peltra polished XGlass.
PULSE CARPET 279

W 300 cm / D 128,8 cm / H 74 cm
W 110,3 cm / D 59,5 cm / H 35 cm
W 74 cm / D 60,7 cm / H 37,9 cm
400x300

Gli schienali free-standing permettono di ridefinire liberamente il layout di un divano morbido e accogliente.



Free-standing backrests allow you to redesign your sofa composition, for a soft, inviting look.

Sand Sofa

Design DANIELE LAGO

Moduli dalle linee dolci e arrotondate
descrivono un comfort contemporaneo.

Soft, rounded shapes define contemporary comfort.





Zeppelin Armchair

Design MAURO LIPPARINI



IT Volumi generosi e forme accoglienti contraddistinguono Zeppelin, la seduta dinamica ed ergonomica che restituisce una sensazione di grande comfort nella zona giorno.

EN Generous volumes and pleasing shapes: Zeppelin is a dynamic, ergonomic armchair offering a feeling of absolute comfort for your living area.

Hoa Table

Design BARTOLI DESIGN

HOA TABLE - Bronzo matt XGlass top. Peltro steel legs.
WOOP CHAIR - Axum 11 fabric. Peltro steel structure.

W 300 cm / D 120 cm / H 76 cm
W 45 cm / D 52,5 cm / H 83 cm

^{IT} Libero da schemi rigidi e definiti, Hoa offre piani delle forme morbide e gentili ispirate alla natura. La disposizione delle gambe cambia a seconda della misura, in una costante ricerca di armonia dei volumi.

^{EN} Free from any rigid pre-defined rules, Hoa offers soft lines for its gently shaped tops inspired by nature. The legs are arranged differently depending on the size, in an effort to seek out harmonious shapes.





Air Soft Table

Design DANIELE LAGO

Il Piani e sostegni sagomati trasformano il vetro in un elemento decorativo in grado di offrire una soluzione di alto pregio dal design essenziale.

EN Moulded tops and supports transform a piece of glass into a simple yet decorative high-end furnishing.

AIR SOFT TABLE - Onice grigio polished XGlass top. Grey smoked glass legs.
WOOP CHAIR - Panama leather 5504. Peltro steel structure.

W 300 cm / D 120 cm / H 76 cm
W 45 cm / D 52,5 cm / H 83 cm

Nacho Chair

Design ARCHIRIVOLTO

IT Dal dialogo tra un solido guscio esterno e una voluttuosa imbottitura interna nasce una poltroncina dal carattere disinvolto.

EN A solid outer shell encases indulgent inner upholstery to create this effortless armchair design.



NACHO CHAIR - Bloom 8 eco-leather and Barkley 1 fabric. Peltro steel structure.

IT Trapuntature definite da precisi dettagli sartoriali descrivono il ritmo elegante di Ruffle, la sedia versatile e dal design leggero, che arreda spazi pubblici e privati.

EN Decorative quilting with tailored details defines Ruffle's elegant rhythm. This versatile chair with a light-look design can furnish both public and private spaces.



RUFFLE CHAIR - Fard leather 2357. Peltro steel structure.

Ruffle Chair

—
Design MAURO LIPPARINI



RUFFLE CHAIR - Barkley 37 fabric. Peltro steel structure.



Zeppelin Chair

Design MAURO LIPPARINI

IT Estetica e comfort si incontrano in una seduta morbida ed ergonomica dalle linee curve e avvolgenti che assecondano le forme del corpo.

EN *A soft, ergonomic seat with curved, contoured lines: the perfect mix of aesthetics and comfort.*



36 e 8 Sideboard

Design DANIELE LAGO

IT Un suggestivo gioco di volumi pieni e vuoti combina soluzioni di grande contenimento e funzionalità a un inedito design, per uno dei best seller LAGO.

EN Full and empty spaces make for spacious storage options and functional design features, for one of LAGO's best-selling models.



36e8 SIDEBOARD 2108 - Bronze smoked mirror fronts.
Nero lacquer structure. Sahara noir polished XGlass shelf.
Extra-clear glass supports.

W 220,8 cm / D 40,6 cm / H 78,7 cm



36e8 Glass Sideboard

Design DANIELE LAGO

^{IT} Nuove espressioni materiche coniugano le qualità di un materiale nobile come il vetro alle emozioni di preziosi marmi.

^{EN} *New textured touches combine the qualities of a noble material - glass - with the look and feel of luxurious marble.*

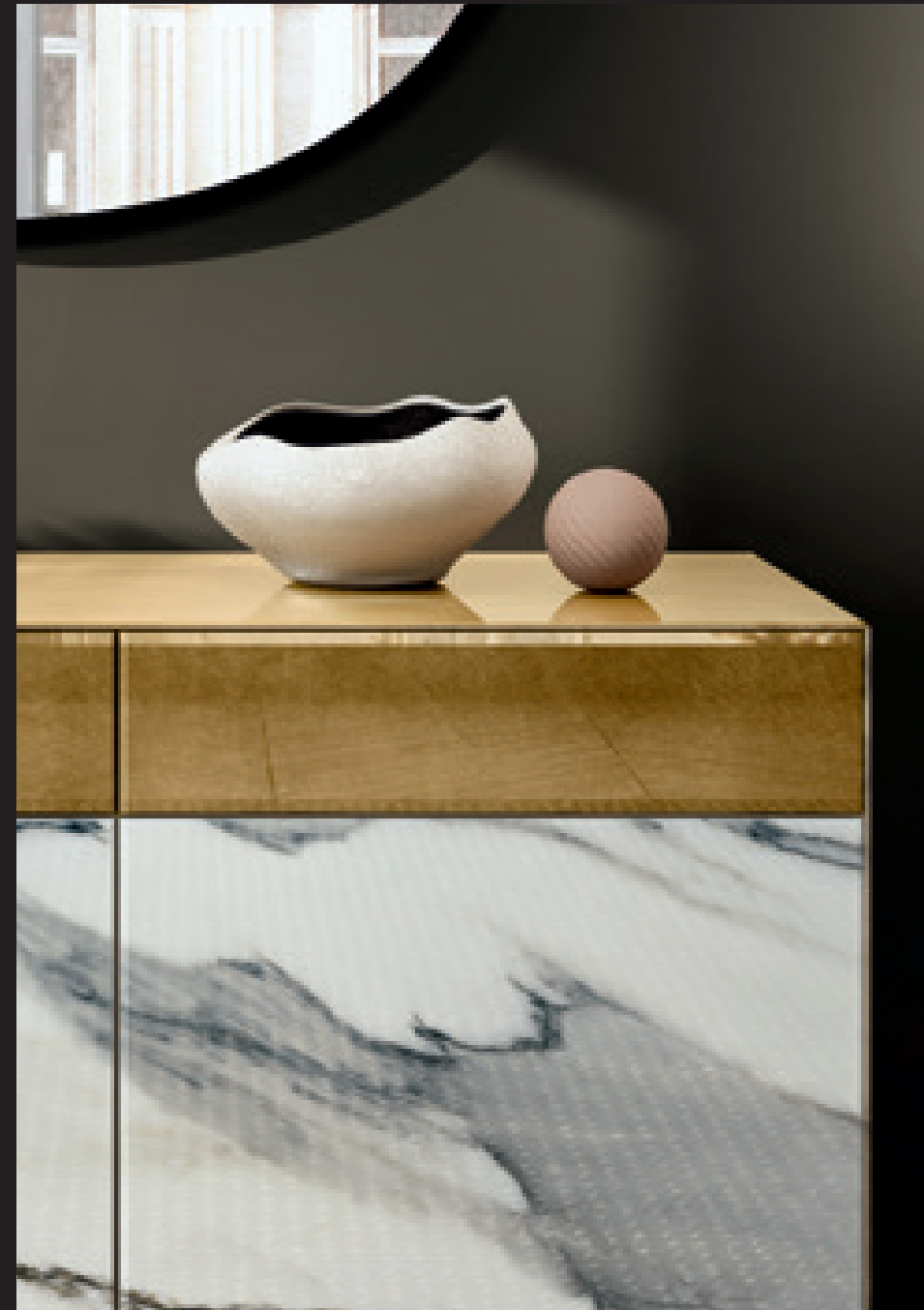


36e8 GLASS SIDEBOARD 1324 - Verde alpi polished XGlass fronts. Nero lacquer, grey smoked glass structure. Grey smoked glass supports.

W 239,2 cm / D 40,6 cm / H 75,3 cm

Materia Sideboard

Design DANIELE LAGO



MATERIA SIDEBOARD 2605 - Oro polished XGlass fronts and top
Paonazzo polished XGlass fronts and structure
PLEASURE MIRROR 1393 - Naturale

W 221,6 cm / D 51 cm / H 71,1 cm

W 100 cm / D 2,7 cm / H 98,1 cm



MATERIA SIDEBOARD 1003 - Coccodrillo marrone polished XGlass fronts and structure.
Peltro steel supports.

W 221,6 cm / D 40,6 cm / H 75,7 cm

N.O.W. Sideboard

Design DANIELE LAGO

^{IT} Le nuove misure della collezione di madie N.O.W. offrono soluzioni di contenimento per tutte le aree della casa.

^{EN} New sizes for the N.O.W. sideboard collection mean more storage solutions for all areas of the home.

N.O.W. SIDEBOARD 1374B - Havana, iuta, tortora polished glass, Bronzo polished XGlass, bronze smoked glass fronts. Havana polished glass top. Peltra steel supports.
PLEASURE MIRROR 1395 - Bronze smoked.
PLEASURE MIRROR 1391 - Bronze smoked.

199,8 cm / D 40,6 cm / H 78 cm

122,9 cm / D 2,7 cm / H 107,1 cm

W 51,5 cm / D 2,7 cm / H 47,8 cm



N.O.W. SIDEBOARD 1376 - Onice grigio polished XGlass, bronze smoked glass fronts. Onice grigio polished XGlass top. Peltro steel supports.

W 92,8 cm / D 40,6 cm / H 142,8 cm



Mirrors & Consoles

FINE CONSOLLE

Design DANIELE LAGO

Il design essenziale della consolle Fine combina l'estetica minimale all'eccellenza costruttiva del vetro.

Fine's minimalist design combines sleek aesthetics with an outstanding glass build.

ERA MIRROR 2592 - Grey smoked mirror, Geode polished XGlass frame.
FINE CONSOLLE 2161 - Tundra Metal polished glass top. Grey smoked glass supports.

W 121 cm / D 2,9 cm / H 107,2 cm
W 202,7 cm / D 45 cm / H 76,2 cm



ERA MIRROR

Design DANIELE LAGO

^{IT} Le forme organiche dello specchio Era prendono vita grazie a un gioco di luci che ne enfatizza la cornice materica.

^{EN} Era's organic forms emerge through the interplay of light that emphasises the textured frame around this mirror design.

ERA MIRROR 2591 - Bronze smoked mirror, Paonazzo polished XGlass frame.

W 109,3 cm / D 2,9 cm / H 192,3 cm

MELTY MIRROR

Design DANIELE LAGO

^{IT} Due sagome dalle linee armoniche si sovrappongono presentando l'immagine riflessa in differenti finiture specchio.

^{EN} *Harmonious forms overlap to create a mirror that reflects the interiors, in two different shapes and finishes.*



MELTY MIRROR 2595 - Bronze smoked, grey smoked.
AIR CONSOLLE 2165 - Wildwood grigio. Grey smoked glass supports.

W 138,8 cm / D 4 cm / H 114,2 cm
 W 220,8 cm / D 40,6 cm / H 76 cm



FUZE MIRROR

Design ANDREA LEONI - LAGO STUDIO

^{IT} L'incontro di geometrie e finiture trasforma la pura essenzialità di Fuze in un'originale illusione architettonica.

^{EN} A combination of shapes and finishes transforms Fuze's simple purity into an original architectural illusion.



FUZE MIRROR 2597 - Naturale, grey smoked and bronzo smoked.
MATERIA CONSOLLE 1475B - Port Saint Laurent polished XGlass fronts and structure.
Grey smoked supports.

W 99,4 cm / D 3,6 cm / H 124,6 cm
W 221,6 cm / D 40,6 cm / H 75,7 cm



DEBA CONSOLLE & KIBI MIRROR

Design DANIELE LAGO

^{IT} Il piano sagomato della consolle Deba si veste di suggestivi materiali e arreda con leggerezza ingressi e zone giorno, spazi dove specchiere dalle forme pure completano interior dal carattere ricercato.

^{EN} The shaped top of the Deba console is dressed in evocative materials. Furnish entrances and living areas with a light look, using mirrors with pure, elegant shapes to complete the interior with a refined character.

KIBI MIRROR 2593 - Bronze smoked mirror. Bronzo polished XGlass frame.
DEBA CONSOLLE 2162 - Coccodrillo verde polished XGlass top.
 Grey smoked glass supports.

W 148,4 cm / D 2,9 cm / H 148,4 cm
W 220,8 cm / D 36,6 cm / H 76,2 cm

Bed-In Bed

Design MAURO LIPPARINI

^{IT} Una testiera sagomata, rifinita con cuciture di alta qualità e avvolgente come un abbraccio, definisce le linee morbide di Bed-In, il letto che, con un senso di protezione, contiene lo spazio dedicato al riposo.

^{EN} A shaped headboard, finished with high-quality stitching and enveloping like an embrace, defines the soft lines of Bed-In, the bed that contains the space dedicated to rest, giving a sense of protection.



BED-IN BED - Club 29 fabric.
AIR ROUND COFFEE TABLE - Wildwood scuro.

W 226 cm / D 239 cm / H 93 cm
W 50 cm / D 50 cm / H 148,4 cm





BED-IN BED - Penny 2 fabric.
CLASS BEDSIDE TABLE 2123 - Wildwood grigio top and front.
 Moka laquer structure. Bronze smoked glass supports.

W 226 cm / **D** 239 cm / **H** 93 cm
W 55,2 cm / **D** 40,6 cm / **H** 52 cm



Bounty Bed

Design DANIELE LAGO

^{IT} Le imbottiture generose e gli eleganti accenti sartoriali del letto Bounty restituiscono una sensazione di grande comfort visivo ed ergonomico nella zona notte.

^{EN} The luxuriant padding and tailored accents of the Bounty bed create a feeling of absolute comfort in the sleeping area.



BOUNTY BED - Please 806. Peltro steel legs.
LIVRE BEDSIDE TABLE 2127 - Wildwood naturale top.
 Grey smoked glass supports.

W 204 cm / **D** 230 cm / **H** 98 cm
W 60 cm / **D** 33 cm / **H** 47,4 cm



La lavorazione a 45° e la precisa rifinitura dei dettagli definiscono un comodino dall'eccellente qualità costruttiva.



Precision wood workmanship with a 45° finish and exquisite details make for a bedside table with an outstanding build.

Class Bedside Table

Design DANIELE LAGO



CLASS BEDSIDE TABLE 2123 - Wildwood grigio top and front.
Moka laquer structure. Bronze smoked glass supports.

W 55,2 cm / D 40,6 cm / H 52 cm

Livre Bedside Table

Design DANIELE LAGO

LIVRE BEDSIDE TABLE 2128 - Wildwood naturale top.
Grey smoked glass supports.

W 60 cm / D 33 cm / H 48 cm

LIVRE BEDSIDE TABLES

^{IT} Un piano esagonale sorretto da gambe in vetro sprigiona il carattere scultoreo di Livre, il comodino dal design originale, personalizzabile in differenti materiali e finiture.



^{EN} A hexagonal top supported by glass legs unleashes the sculptural soul of Livre, the bedside table with an original design that can be customised in different materials and finishes.

Le raffinate trasparenze del vetro fumé arricchiscono di nuove suggestioni il comodino Hom, creando atmosfere calde e avvolgenti.



The elegant smoked glass finish adds a new see-through twist to Hom bedside table, creating a warm, ambient feel.

Hom Bedside Table

Design DANIELE LAGO



HOM BEDSIDE TABLE 2124 - Moka polished glass front.
Moka lacquer, bronze smoked glass structure.

W 55,2 cm / D 40,6 cm / H 23,8 cm

36e8 Dresser

Design DANIELE LAGO

36e8 DRESSER 2608 - Havana polished glass, Sahara noir polished XGlass fronts.
Extra-clear glass supports.

W 184 cm / D 40,6 cm / H 70,7 cm

36e8 Glass Dresser

Design DANIELE LAGO

La rivoluzionaria modularità del 36e8 si arricchisce di trasparenze dal fascino contemporaneo.

Clear glass finishes with a contemporary vibe complement 36e8's revolutionary modular build.



36e8 GLASS DRESSER 2138 - Baltico polished glass fronts. Baltico lacquer, grey smoked glass structure. Extra-clear glass supports.

W 184 cm / D 40,6 cm / H 75,3 cm

Materia Dresser

Design DANIELE LAGO

Air Dresser

Design DANIELE LAGO



AIR DRESSER 2139 - Castagno polished glass fronts. Castagno lacquer structure.
Emperador polished XGlass shelf. Extra-clear glass supports.

W 184 cm / D 40,6 cm / H 78,7 cm

Air Walk-in Closet

Design DANIELE LAGO

Dalla leggerezza del sistema Air nasce un funzionale e versatile guardaroba a vista per camere da letto o ingressi.

The ultra-light Air collection now includes a functional and versatile walk-in wardrobe for a bedroom or entrance space.

AIR WALK-IN CLOSET 2122 - Sahara noir polished XGlass fronts.
Nero lacquer, grey smoked glass structure.

W 147,2 cm / D 51 cm / H 184 cm

N.O.W. Wardrobe

Design DANIELE LAGO

Fasce in vetro fumé bronzo completano il mood caldo e sofisticato dell'armadio N.O.W.

Smoked-bronze glass panels complete the N.O.W. wardrobe with a warm and sophisticated mood.

N.O.W. WARDROBE - Fango, bianco and tortora polished glass, bronze smoked glass fronts.
Fineline oak melamine back. Onice grigio polished XGlass drawer fronts.

W 385 cm / D 61 cm / H 265 cm

LACCATO, VETRO LUCIDO E VETRO OPACO

Lacquered, polished glass and matt glass

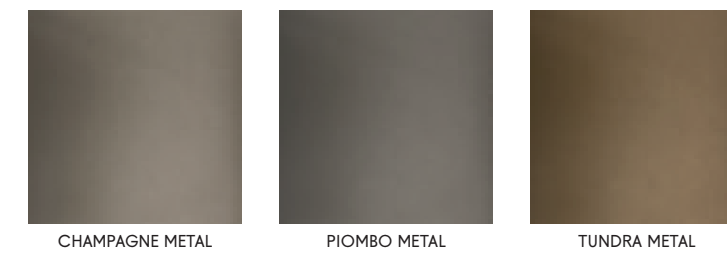


WILDWOOD



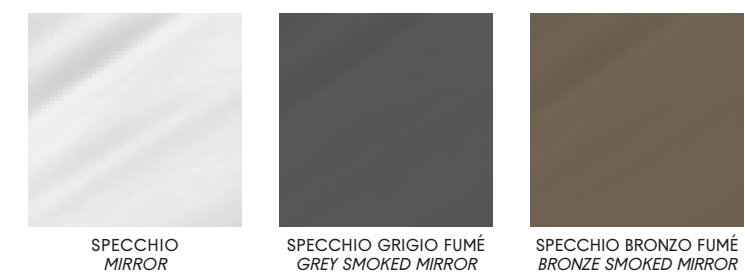
VETRO LUCIDO METAL E VETRO OPACO METAL

Polished and matt metallic glass



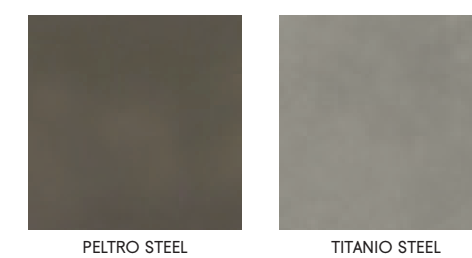
SPECCHI

Mirrors



METALLI*

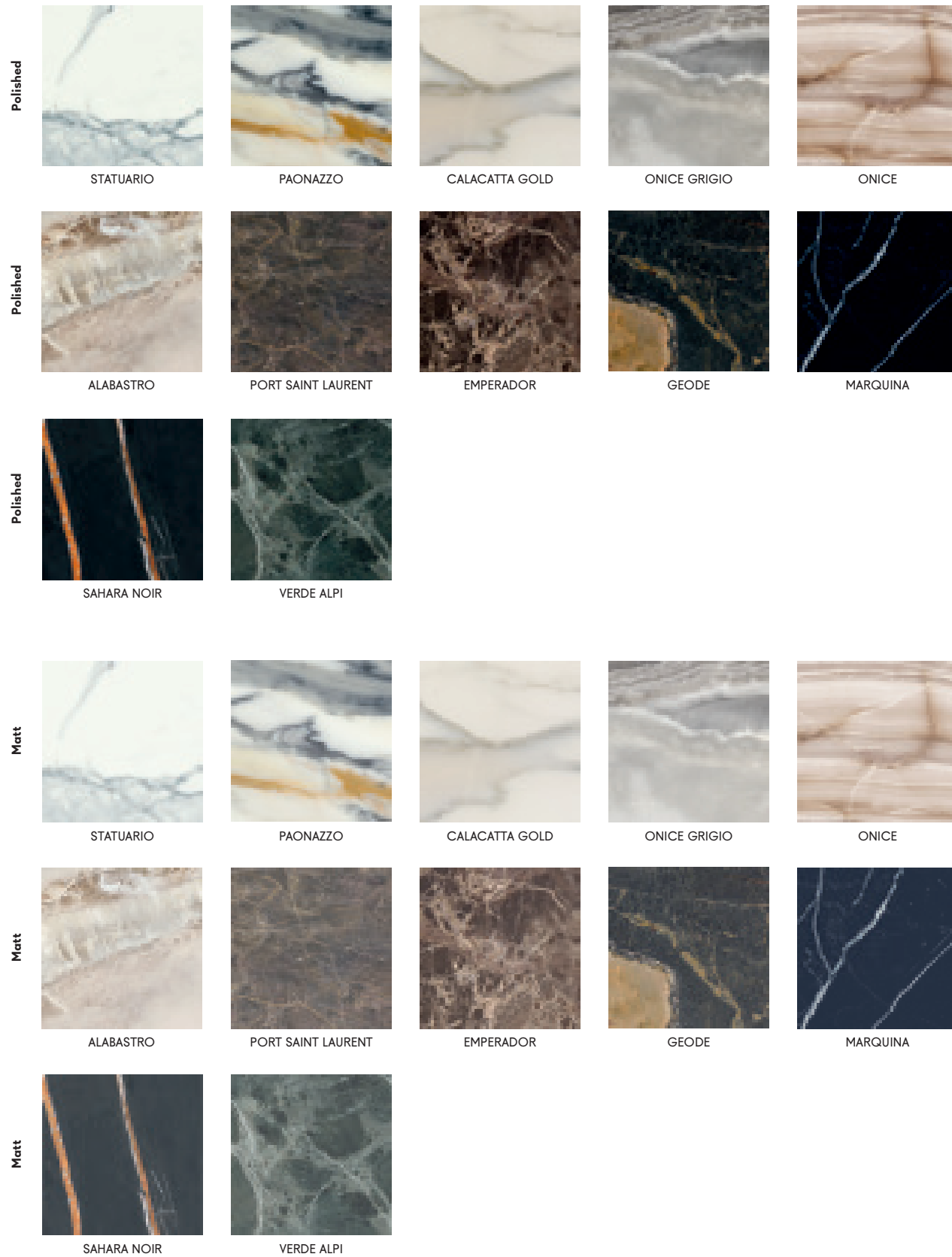
Metals*



* Solo per basi e supporti. - For bases and supports only.

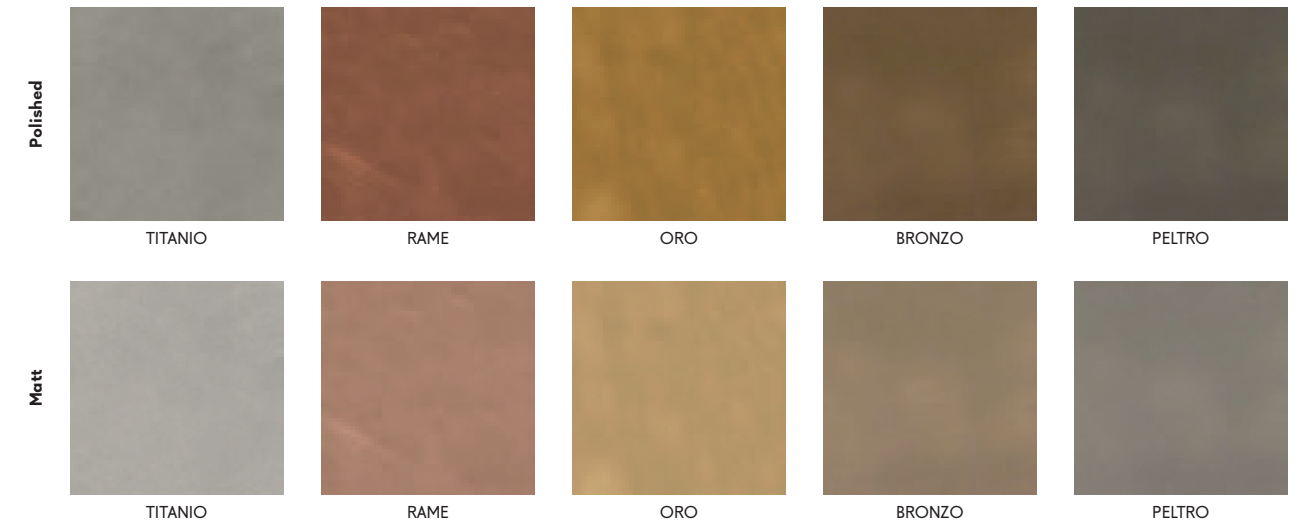
MARBLE XGLASS

Polished and matt XGlass



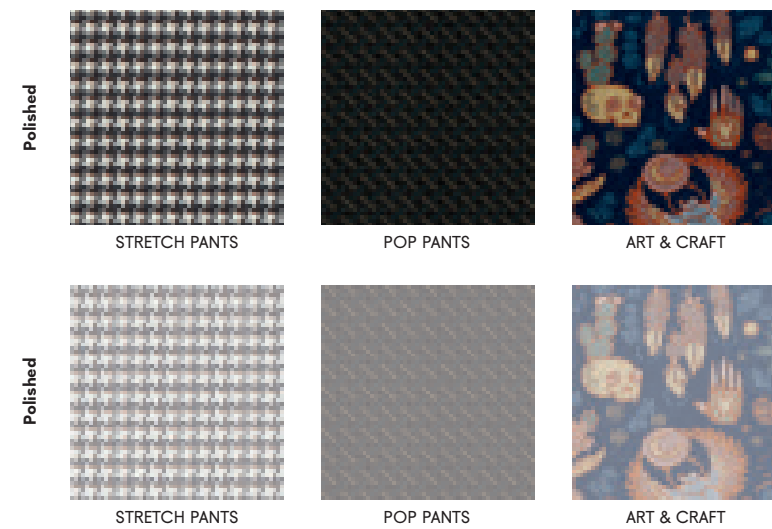
METAL XGLASS

Polished and matt XGlass



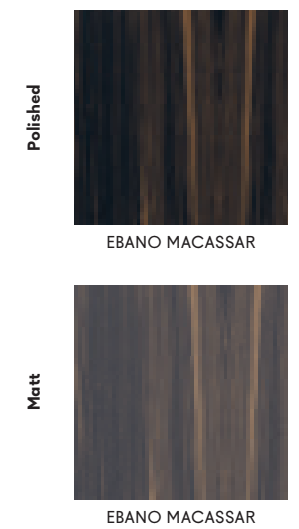
HOME COUTURE XGLASS

Polished and matt XGlass



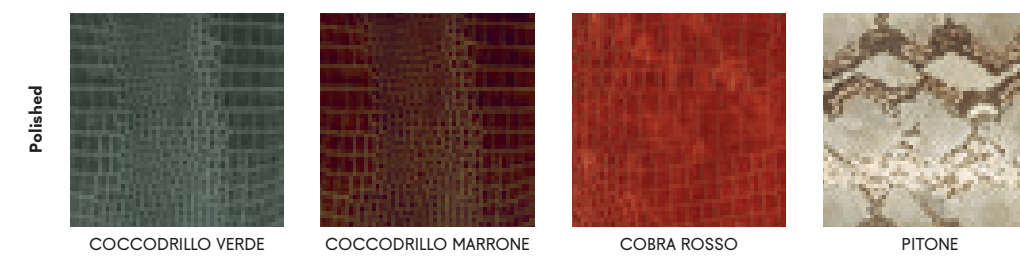
WOOD XGLASS

Polished and matt XGlass



ANIMAL ZERO XGLASS

Polished XGlass

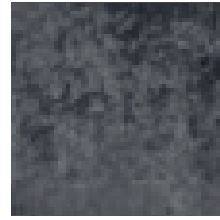


CARPETS

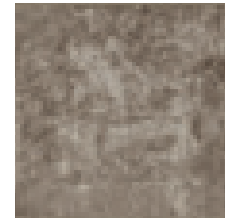
Glenn



378

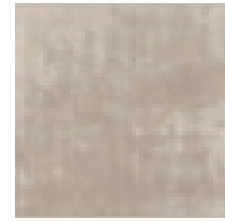
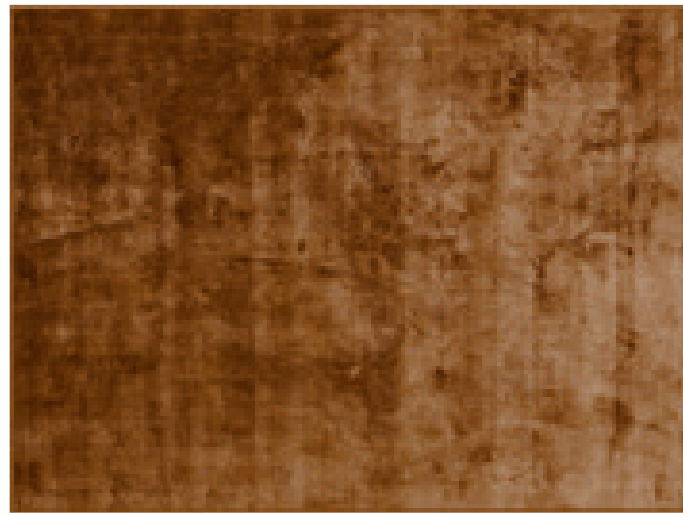


691

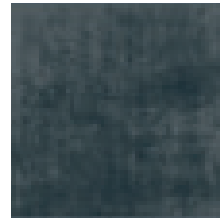


122

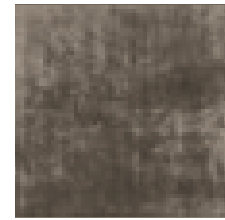
Pulse



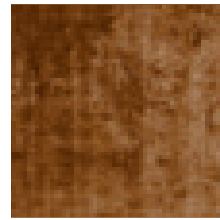
279



352

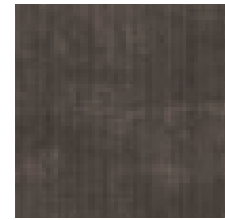


795



246

Kaya

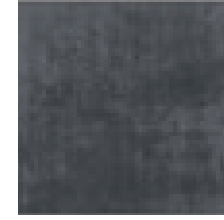


029



797

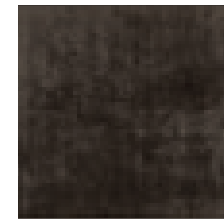
Diman



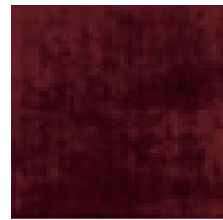
695



539

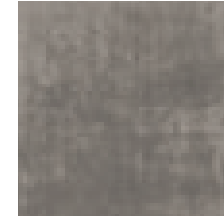
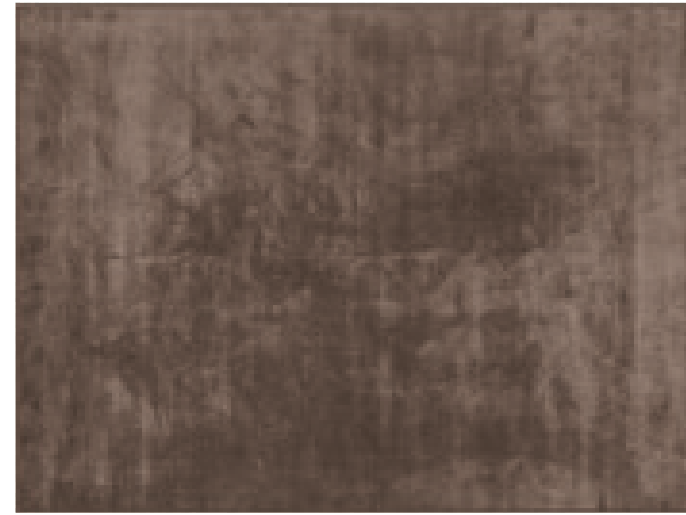


421

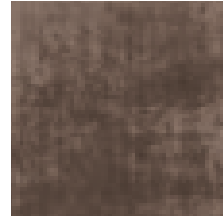


315

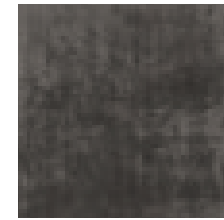
Kipo



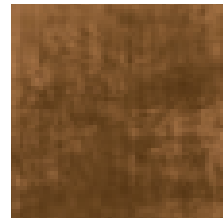
171



171



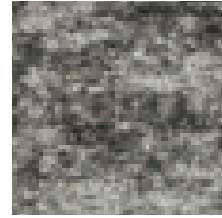
475



475

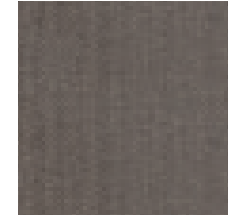
CARPETS

Dive



694

Hive

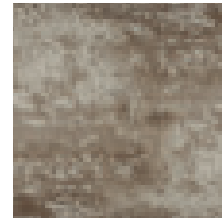


396

Ammos

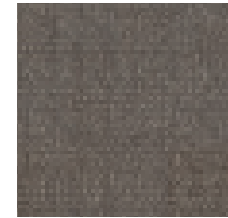
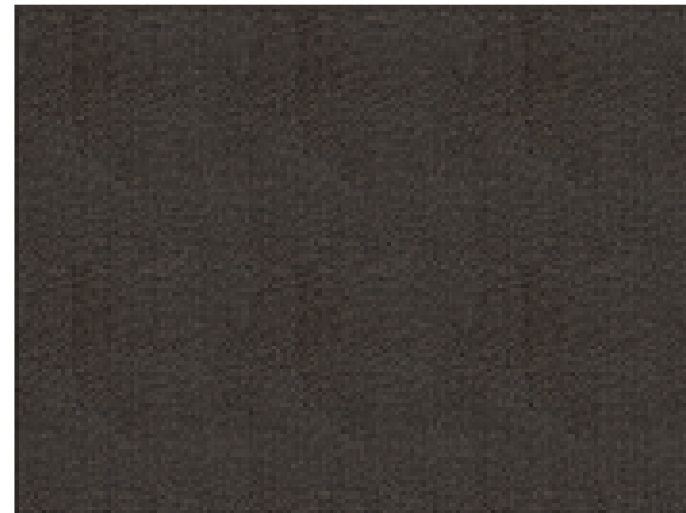


171

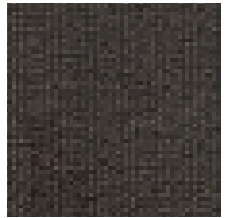


475

MozeK

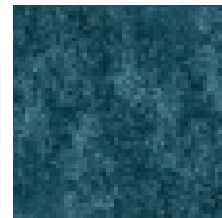
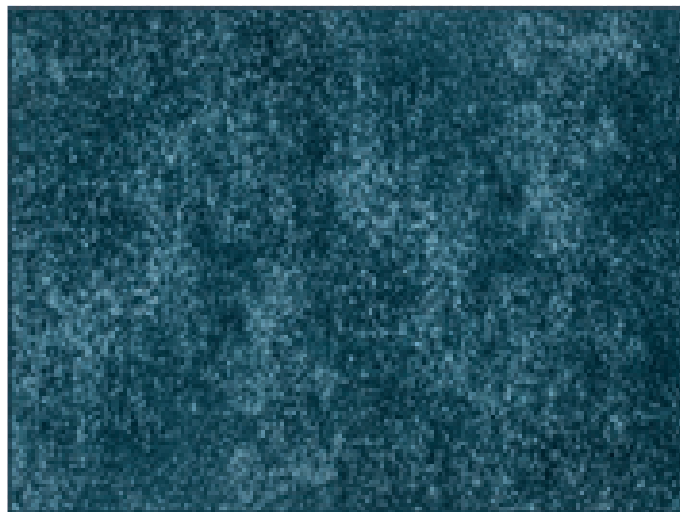


375



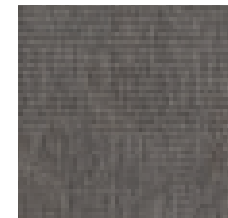
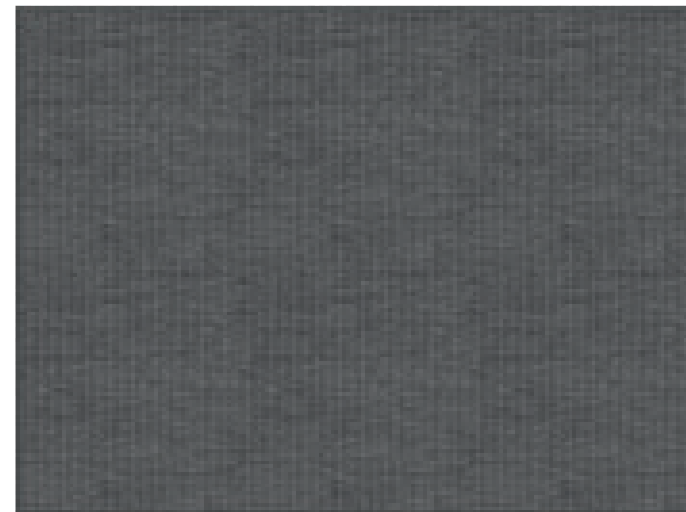
493

Phos

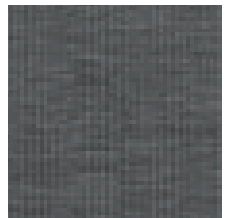


356

Suna



297



396

Product

Chief Designer

Daniele Lago

Senior Designer

Andrea Leoni

Project Designers

Andrea Pilotto

Leonardo Babolin

Senior Interior Designer

Alessandro Corrà

Product Manager

Enrico Saggion

Catalogue

Art Direction

Lago Creative Department

Project Coordinator

Enrico Saggion

Graphic Designer

Lisa Bortolami

Copywriter

Eleonora Grazioli

Translator

Lexilab

Photographer

Riccardo Urnato

Styling

makethatstudio

Styling Assistant

Lucia Tramarin

Digital Rendering

Archè Agency

Print

Grafiche Antiga

Aprile 2023

Awards and mentions

Product Design

2022 Madia N.O.W. - Selected by ADI Design Index 2022

2020 Janeiro Table - Selected by ADI Design Index 2020

2019 Bold Table - Winner of Good Design Award

2018 Air Kitchen - Compasso d'Oro ADI Honorable Mention

2017 Lift Chair - Winner of Good Design Award

2017 Vertigo Table - Winner of Good Design Award

2017 Air Kitchen - Winner of ADI Design Index 2017

2016 Air Kitchen - Winner of Good Design Awards

2016 Air Kitchen - Best Product/Kitchen Section Salone del Mobile. Milano Awards 2016

2014 Joynt Chair - Compasso d'Oro ADI Honorable Mention

2011 Et Voilà - Winner of Good Design Award

2010 Air Sofa - Winner of Good Design Award

2009 Huggy Armchair - Winner of Good Design Award

2009 LagoLinea Shelf - Winner of Good Design Award

2008 36e8 kitchen - Winner of Good Design Award

2002 Statica Bookshelf - Selected by Biennale

2001 Net Storage - Selected by IDot

Projects & Innovation

2019 XGlass - Winner Good of Design Award

2018 LAGO Welcome Cocoon Maldives - World Luxury Restaurants Awards

2017 LAGO Welcome Cocoon Maldives - South Asian Travel Awards

2018 Premio ICT Smau Innovazione

2017 LAGO Design Network - Premio Nazionale per l'Innovazione nei servizi 2017

2017 Talking Furniture - Premio Innovazione Smau

2017 Never Stop Designing Spaces - Winner of ADI Design Index 2017

2016 LAGO Interior Life Network - Selected by ADI Design Index 2016

2014 Premio ICT Smau Innovazione

2009 Olga - Premio ICT Smau Innovazione

LAGO SPA
via dell'Artigianato II, 21
35010 Villa del Conte (PD)
www.lago.it



DESIGNED IN ITALY
MADE IN ITALY

LAGO.IT